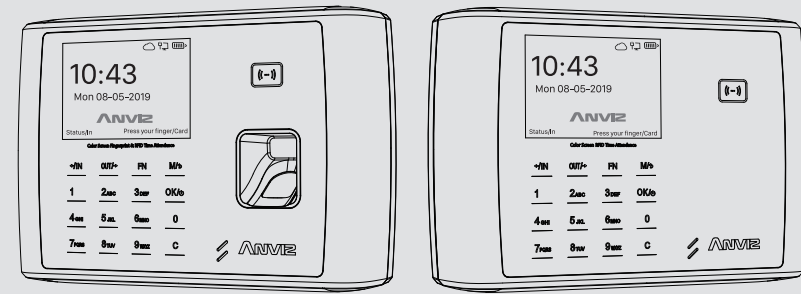
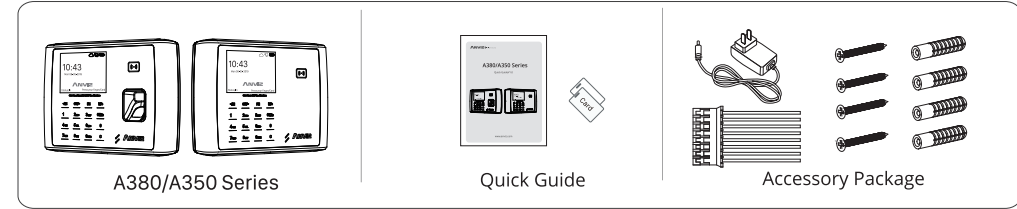


A380/A350 Series

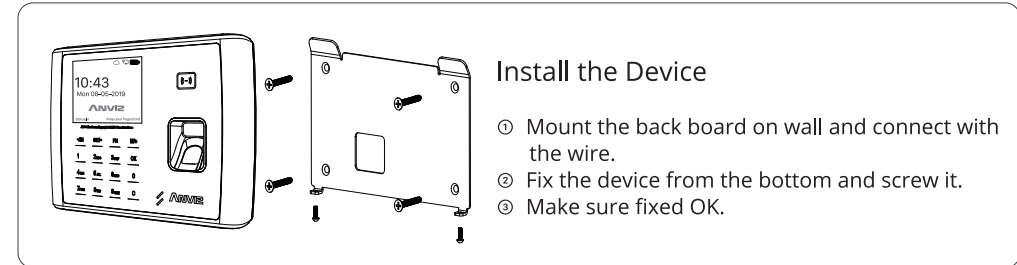
Quick Guide V1.0



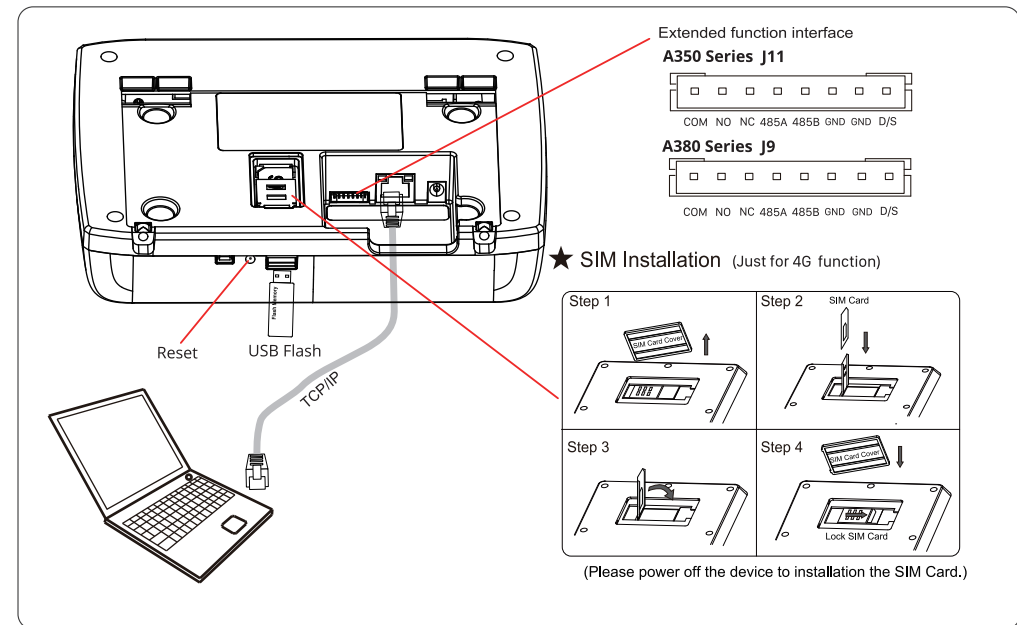
1. Packing list



2. Installation Diagram & Installation Step



3. A380/A350 Series Wiring



Extended function interface:

Function	Relay Output			RS485			Door Switch	
	COM	NO	NC	485A	485B	GND	GND	D/S
No.	①	②	③	④	⑤	⑥	⑦	⑧
Cable Color	Purple	Yellow	Black	Green	Blue	Orange	White	Green

Important Notice

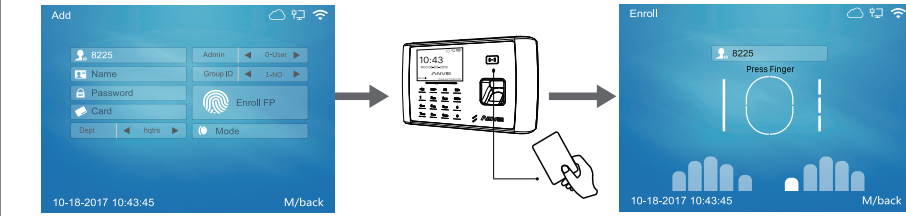
Please follow the wiring diagram as it is displayed. Damaged products due to improper wiring are not covered under the product warranty.

4. Operation Guide

1. Basic Settings



2. Add Users



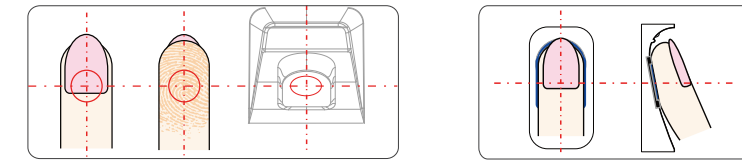
Go to User -- Add menu. Must fill the User ID and press "OK" jump to next text bar to fill the user information.

Swipe the card at card mark area, and the device will get the card number, and then move to "Enroll FP" section and click [OK] key.

Scan the same finger three times to enroll the fingerprint.

3. Verity the Fingerprint

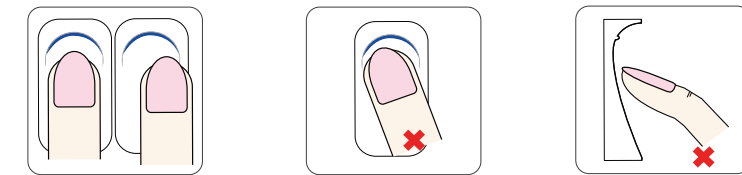
• Correct Method:



Place finger in the center of the sensor.

Place finger flatly and smoothly on the sensor.

• Incorrect Method:



Finger not placed on the center of the sensor.

Finger placed inclined.

Use of fingertip.

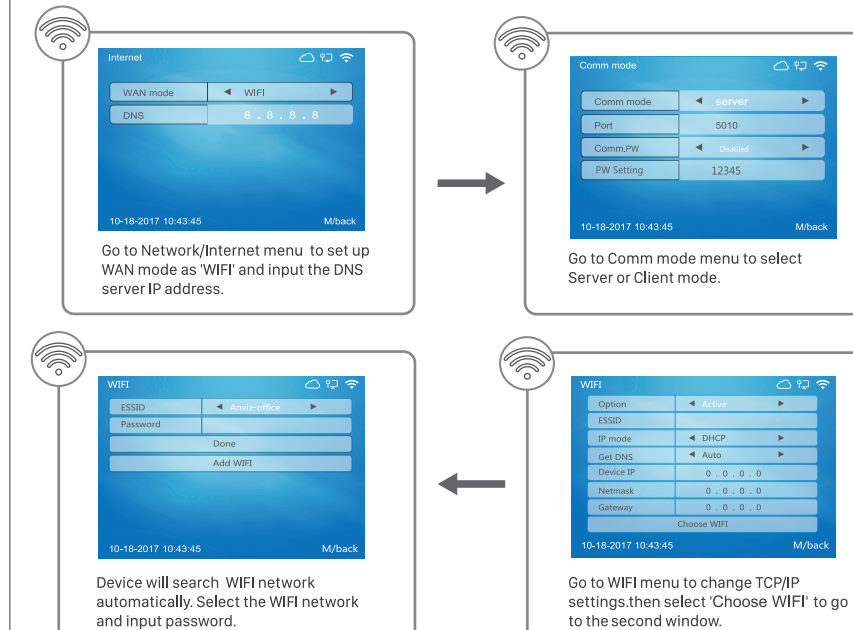
4. Character Input Method

- When you need to edit your name, you need to enter characters. Here are the steps for entering characters:
- * Use the left and right move keys to move the cursor to the area you want to edit.
- * Press the [Fn] key on the keyboard and a character input window "Aa" will be displayed at the bottom of the screen.
- * Press [IN] on the keyboard, the letter window will switch between "Aa", "123", ".!?", and "Picture", you can select the window to enter Letters, numbers, or special characters.

5. Communication Settings

- * Switch to Network/Internet menu, select Ethernet (WiFi is optional)
- * Switch to network/communication mode, select server or client mode
- * Switch to the network menu and set the Ethernet parameters according to your network environment.
- * On the management computer, spell the IP address of device to ensure that it can be worked together.
- * When the device has WiFi function, it is suggested that the device should be installed as far away from the metal parts as possible. The distance between the installation location of the device with WiFi function and the router should be within 30m.

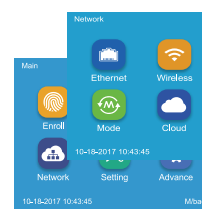
1. WiFi Settings (optional)



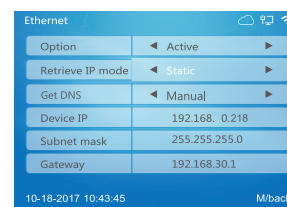


Anviz brand and product are trademarked and protected under law of the United States. Unauthorized use is prohibited.
For more information, please visit www.anviz.com, or send email to sales@anviz.com for more help.
©2019 Anviz Global Inc. All Rights Reserved.

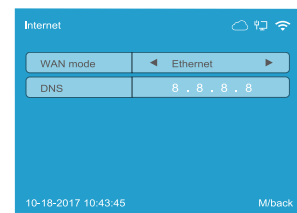
2. Ethernet Settings



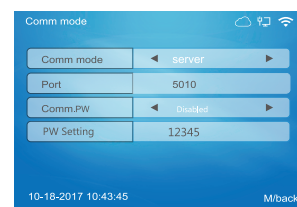
Go to Network menu.



Go to Ethernet menu to change TCP/IP settings.

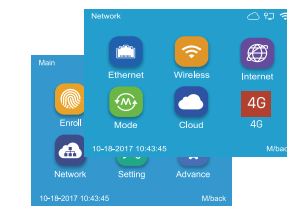


Go to Internet menu to set up WAN mode as 'Ethernet' and input the DNS server IP address.

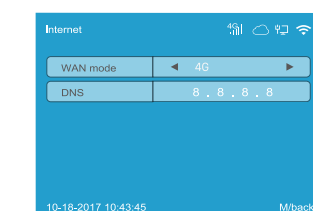


Go to Comm Mode menu to select Server or Client mode.

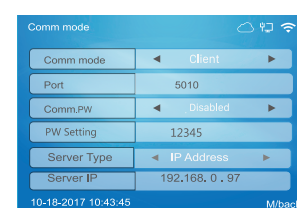
3. Setup 4G Network (Optional)



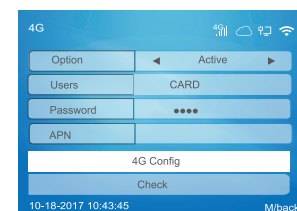
Go to Network menu.



Go to Internet menu to set up WAN mode as 'Ethernet' and input the DNS server IP address.



Go to Comm Mode menu to select Client mode.

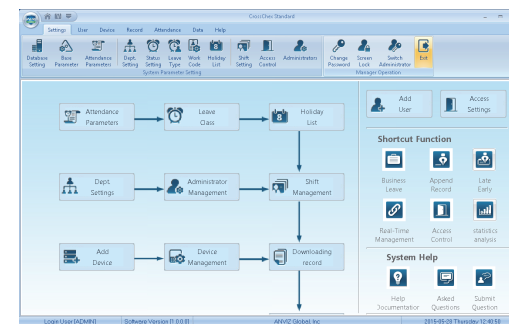


Go to 4G menu setup Option into Active and press 4G Config

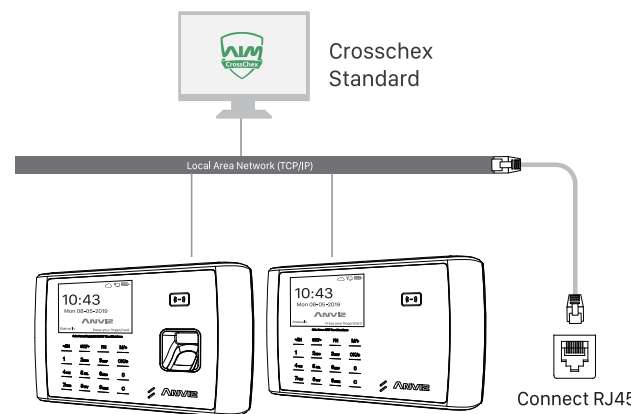
6. Working with Management Software

1. Working with Management Software

Scan the QR code on user manual to install the software.



How to connect the Device with Software?
Method One: Connect to Network



Method Two: Connect to Cloud

W Pro series can be managed by Anviz cloud management platform Crosschex cloud.
For more details, please refer to <https://www.anviz.com/product/crosschex/cloud.html>.

2. Enable Communication between Device and the Management Software CrossChex

- Turn on management software CrossChex.
- Go to Device tab. Search and Add the device to management software CrossChex.
- Click Synchronize Time button to communicate with Device. If Synchronize is successful, the device icon will turn to blue.

3. The Management Software CrossChex Features

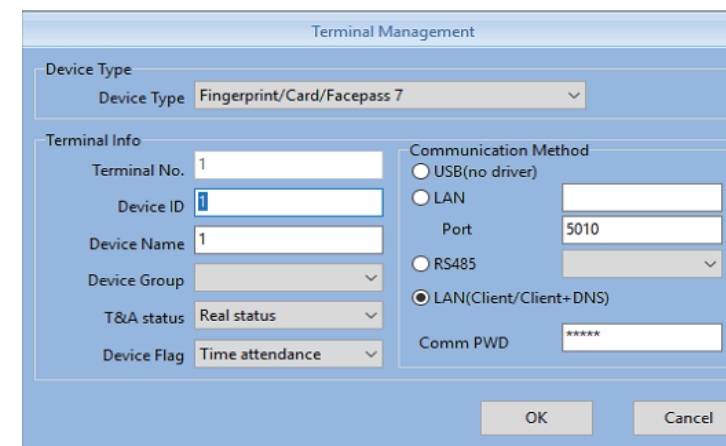
- Device\Backup User: Download user info from Device to CrossChex.
- Device\Download Records: Download records from Device to CrossChex.
- User\Modify: Edit name or other user info. Then click "Upload User" to Upload user info to device.
- Record\Search: Search and view the records.
- Attendance: Calculate, Search results and Generate reports.
- Data\Backup Database: Backup Database.
- Setting\Shift: Set up Time Table and Scheduling.
- Device\Device Parameter: Set up device. Clear records on Device or Reset Device to factory settings.



Scanning QR code to download CrossChex software

4. Application Software Setup 4G Network (Optional)

- The specs of the IP Port must be the same as the device, Settings\Basic Parameter \Communication Parameter\ Hit 'Apply' to restart the software after setting up.
- The Users and Password: is refer to the operator's account name and password on the 4G module.
- Choose client mode when adding the device.



It's Never Too Late To Change



Dear Customer :

Thank you for choosing Anviz products. As a leading global provider of security equipment and systems, Anviz has always attached great importance to environmental protection, we are propelling various environmental improvement measures in the circle of production, packaging and sales.

As the saying goes "It's Never Too Late To Change" --- Every Year, Anviz has been burning millions of CDs and supplying world wide with our devices. In order to protect the environment, Anviz has decided to go "CD Free" campaign since June 1st 2019. We will provide QR code for you to download the electronic documents to make sure that you understand how to install and use Anviz devices.

Anviz appreciates your understanding and supporting our small efforts towards protecting the natural resources.



<https://bit.ly/2WugbYp>

Dropbox



<https://bit.ly/2Vn0wh6>

Google



<https://bit.ly/2J9qA95>

Anviz